



Cell Saver[®] Elite[®]

Autologous Blood Recovery System

Performance you can count on –
because patients are counting on you.




HAEMONETICS[®]

Cell Saver® Elite®

You know you're at your best when **everything is working as it should**

When the surgeon is focused on the surgery. And the patient is getting what's best—their own high-quality blood. Your standards are high. That's why you demand excellence.

We've evolved cell salvage to a higher level...yours.

The **Cell Saver® Elite®** system provides hospitals with an easy-to-use, reliable way to recover and deliver back a patient's own high-quality blood during medium to high blood loss procedures, including cardiac, orthopedic, trauma, transplant, vascular, and OBGYN surgeries. The complete system is designed to be intuitive and flexible for optimal performance and to support exceptional patient care.

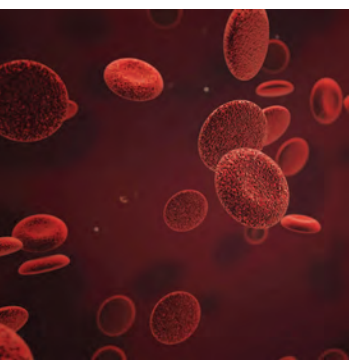
What a higher level of performance looks like:

- ✓ Everything running smoothly.
- ✓ A focused surgeon.
- ✓ And a well cared for patient.
- ✓ All supported by a state-of-the-art system.



Focus on **quality** and **ease of use**

The Cell Saver® Elite® provides patients with their own fresh, washed blood, preventing an allogeneic transfusion while helping to reduce costs. Its integrated SmartSuction® is gentle on red blood cells (RBC's), preserving them for transfusion. And, its fat reduction protocol is designed for optimal performance, while still offering custom settings that allow for modifications during a procedure.



This results in:

- High hematocrit with excellent RBC recovery—providing more red cells for transfusion.
- Optimal washout of undesirable components.
- Exceptional fat removal performance.
- Maximized patient safety—with autotransfusion and sequestration.

High Quality Red Blood Cells (RBC's)¹

■ Hematocrit (Hct) level ~ 60%

■ RBC recovery ~ 94%

■ Washout performance

✓ Albumin removal ~ 98%

✓ Free Hemoglobin ~ 99%

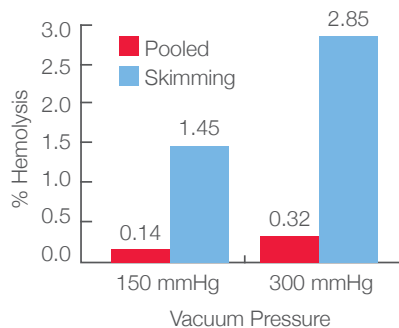
✓ Heparin removal ~ 99%

✓ Potassium ~ 96%

■ **Fat Removal > 99%**²

Integrated SmartSuction

- Protects RBC's while maintaining optimal suction.
- Significantly reduce hemolysis compared to constant pressure.³
- More accurate and reliable than wall suction.



Gregoretti et al. showed that greater hemolysis is associated with higher suction forces. Hemolysis is even greater when air mixes with blood.⁴

1. Data on file at Haemonetics Corp. TR-OTH-100646. Actual performance results may vary depending on in-use variables. Test results are approximate using Haemonetics Default with 225 mL processing bowl.

2. Data on file at Haemonetics Corp. TR-OTH-100641A. Actual performance results may vary depending on in-use variables. Test results are approximate using Fat Reduction default protocol with 225 mL processing bowl.

3. Elkin KR, Yazer M, Kameneva M, Waters J. Transfusion 2007;47(11):20A-21A [DR107247]

4. Gregoretti et al. Transfusion 1996;36:57-60 (DR107498)

Cell Saver® Elite®

Fast, reliable, and intuitive

The system is fast, reliable, and intuitive, incorporating state-of-the-art software enhancements.

You'll have the flexibility to define and save password-protected protocols to meet unique surgical needs. The system's touch screen instructions and messaging are easy to read and navigate, complete with on-screen help. Its status beacon is highly visible, from any direction, and the barcode scanner captures disposable, patient, and surgical procedure information.



User friendly, full color touch screen



Intuitive and simple programming



- Easy to navigate touch screen with color-coded messaging and corresponding status beacon that can be seen throughout the OR.
- Fast start-up time with suction options available in seconds.
- On-screen help is always available.
- Minimal training necessary to keep staff proficient—meaning more time focused on the patient.
- One touch operation with flexibility to customize and save settings for your unique needs.
- Ability to password protect settings groups.
- Custom alarm tones and volume controls.
- Preset procedure record information for ease of entry.
- Flexibility to define settings group for system start-up.



Easy to transport between ORs

- Smaller footprint, lightweight, and portable.
- Multiple storage options.
- Durable casters with easy on/off locks.
- Components fold away for easy transport.

Fast, easy, disposable set-up

- Cell salvage and sequestration sets are color-coded for ease of use.
- Single barcode scanning for all disposable sets and ease of data entry.
- Multiple bowl volume options and packaging configurations.



70 mL



125 mL



225 mL

Cell Saver® Elite®

Secure, data collection, management and transfer capabilities

- Minimize human errors and associated costs through accurate data collection and transfer.
- Capture and store up to 100 procedures.
- Track and trend procedure data effortlessly with procedure records downloaded directly to your PC.
- Technical data downloads can be accessed for analysis and best practice sharing.



Meeting your product performance needs of today, while planning for tomorrow.

Haemonetics meets your clinical performance needs of today, while planning for tomorrow. The Cell Saver® Elite® software architecture and system capabilities allow for continued advancement—all while providing secure data collection and transfer.

This results in:

- The best care for patients.
- A reduced need for allogeneic transfusions.
- A commitment to high-quality product engineering, design, manufacturing, and reliability.
- A platform that allows for quick software upgrades.



Ordering Information

Description	List Number	Qty per Case
Cell Saver Elite System	CSE-E-XX	1
Cell Saver Elite Cart	CSE-EA-1000	1
Cell Saver Elite Fast Pack (225 mL, 205, 208, HAR-A-1000)	CSE-FP-225V	4
Cell Saver Elite Fast Pack (225 mL, 220, 208, HAR-A-1000)	CSE-FP-225F	4
Cell Saver Elite Fast Pack (125 mL, 205, 208, HAR-A-1000)	CSE-FP-125V	4
Cell Saver Elite Processing Set (225 mL)	CSE-P-225	8
Cell Saver Elite Processing Set (125 mL)	CSE-P-125	8
Cell Saver Elite Processing Set (70 mL)	CSE-P-70	8
Sequestration Kit	CSE-SQ-1000	8
Collection reservoir w/150 µ filter, 3 L	00205-00	4
Collection reservoir w/20 µ filter, 3 L	00220-00	4
Cell Saver Aspiration & Anticoagulation Line	00208-00	20
SmartSuction® Aspiration & Anticoagulation Line	HAR-A-1003	10
SmartSuction Filtered Vacuum Line, non-sterile	HAR-A-1000	10
RBC Bag, 1000 mL	00245-00	40
Waste Bag, 10 L	CSE-B-1000	10
70 mL Bowl Chuck Adapter	107581-00	1
40 µm Microaggregate Blood Transfusion Filter	SQ40S	40
40 µm Microaggregate Blood Transfusion Filter with attached straight administration set	SQ40SK	16
40 µm Microaggregate Blood Transfusion Filter with attached Y-type administration set	SQ40SY	16
LipiGuard Filter for Salvaged Blood Stand Alone (no administration set attached)	SB1E	20
RC Leukocyte Reduction Filter for Intraoperately Salvaged Washed Blood Stand Alone (no administration set attached)	RS1	20
Post-op Line	01500-00	20
Extended Post-op Line	01550-00	20
User Manual	120747-XX	1

Specifications

Device only	Height: 16.5 in (41.9 cm); Width: 11.75 in (29.8 cm); Depth: 21.5 in (54.6 cm)
Device with cart	Height: 72 in (182.9 cm) poles extended; 48 in (121.9 cm) poles down; Width: 21 in (53.3 cm); Depth: 26.5 in (67.3 cm)
Weight of device	< 56 lbs (25 kg)
Weight of cart	< 40 lbs (18 kg)
Voltage	100–240 VAC ±10%
Pump speed	0–1000 mL/min (adjustable)
Centrifuge speed	Latham bowl: 5650 rpm; Blow-molded bowl: 7500 rpm; Sequestration: 2050-5650 rpm (adjustable)
Fuse rating	100–240V: T3.15A250V
Operating frequency	47–63 Hz
Laser classification	Class 3R laser product
Power cord length	16 ft (4.9 m)
Certifications	ETL listed

Haemonetics is your **partner in practice**

We offer access to procedural data and troubleshooting to support best practices, **dedicated** field services—including clinical specialist teams, **knowledgeable** sales teams, and **award-winning** customer service.

This results in:

- A committed partner—starting with implementation and training and supporting all ongoing needs.
- Ensured staff proficiency during full initial implementation.
- A hotline for customer support.
- Global presence for 40+ years servicing the hospital, plasma, and blood center communities.



Experience exceptional surgical suite performance, supported by the Cell Saver[®] Elite[®]. **Contact us today.**
www.haemonetics.com

For a list of worldwide office locations and contact information, visit www.haemonetics.com/office/locations

© 2016 Haemonetics Corporation. Haemonetics, Cell Saver, Elite, and SmartSuction are trademarks or registered trademarks of Haemonetics Corporation in the USA, other countries, or both. 09.2016 USA. COL-COPY-001071-IE(AA)

Haemonetics S.A. ■ Signy Centre ■ Rue des Fléchères 6 ■ P.O. Box 262 ■ 274 Signy-Centre ■ Switzerland ■ www.haemonetics.com